

# My bean-growing diary

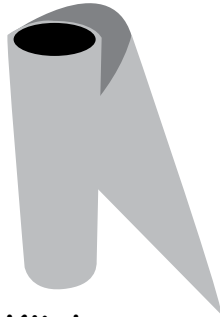
## You will need:



A bean



A see-through beaker



Kitchen towel



Soil



A plant pot

## Step 1

Hold the paper towel and place your bean inside it. Put it in the beaker. You will need to water your bean regularly to make sure the paper towel stays moist.

## Step 2

Once the bean has roots and a shoot, fill your plant pot with soil and place your bean in it. Make sure the roots are buried in the soil and the shoot is peeking out of the earth!

What do you notice?



Record your results in your bean diary (on the next page).

Look for these parts, and label them in your drawings:

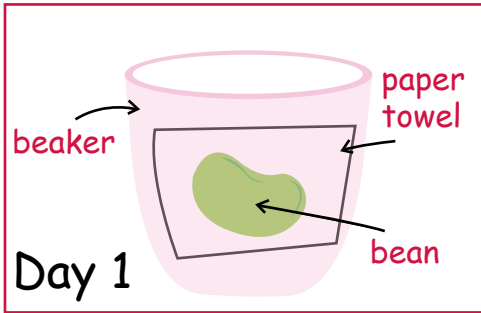
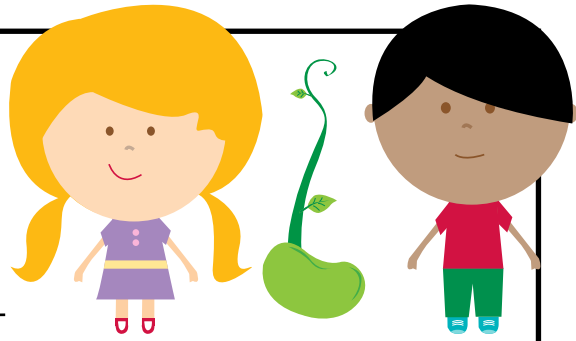
Shoot

Roots

Stem leaf

# My bean diary

by \_\_\_\_\_



Day 2

Day 3

Day 4

Day 5

Day 6

Day 7

Day 8